



Common Uses

- Motorcycle Hauling
- Material Transport
- Recreational Hauling
- Snow & Ice Management
- Off-Roading

Deck Features

- 2,500lbs loading and dump capacity
- Compatible with Class 2-3 pickup trucks
- 45° Rear approach angle
- Up to ~55° dump angle
- Easy access tie-down points
- Structural steel construction
- Capable of hauling three wheeled motorcycles, choppers, or up to two full sized motorcycles
- High quality epoxy prime and powder coated finish
- To be paired with the AmeriDeck™ Lift System





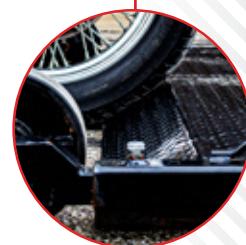
Fully Detachable Decks



Easy Access Tie Downs



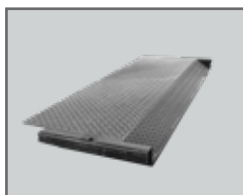
Adjustable Deck Legs



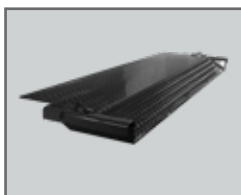
45° Approach Angle



OPTIONS



Standard 12.5" Deck Extension



Extended 18" Deck Extension



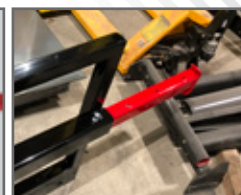
Sportdeck 11.75" Deck Extension



Bolt-On Wheel Chocks



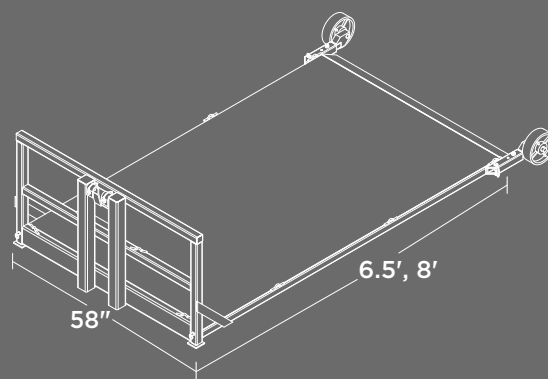
Wireless Remote



Bulkhead Extendable Tie Downs

DECK SPECIFICATIONS

	6.5'	8'
DIMENSIONS	58" W X 78" L	58" W X 96" L
WEIGHT	503LBS	572LBS
FLOOR	1/8" DIAMOND PLATE	
RAMP	4" RAMP WITH 45° LOADING ANGLE	
TIE DOWN LOOPS	(3) PER SIDE	
CROSS MEMBERS	CHANNEL ON 12" CENTERS	
DUMP ANGLE	~55°	~45°



Specifications are subject to change with or without notice. Products not warranted for any specific purpose.