

# 2019 - 2020 PRODUCT CATALOG



BUILT TO HUMBLE **MOTHER NATURE**



## TABLE OF CONTENTS

1	HUMBLE BEGINNINGS
3	INDUSTRY LEADER
5	#SNOFIGHTERS
7	PRO-TECH QUALITY
9	PRODUCT SHOWROOM
12	<b>NEW PRODUCT:</b> PRO CLEAT
13	RUBBER EDGE
15	<b>NEW PRODUCT:</b> FUSION EDGE
17	STEEL EDGE
19	PULLBACK
21	LOW PROFILE ANGLE
25	SUPER DUTY
27	FOLDOUT
29	V PLOW
31	TURF PUSHER
33	SNO BLADE
35	WEAR PARTS
37	SPECIALTY PARTS
39	CUSTOM SNO PUSHER OPTIONS
41	PRODUCT SPECIFICATIONS
44	REPLACEMENT PARTS



# HUMBLE BEGINNINGS

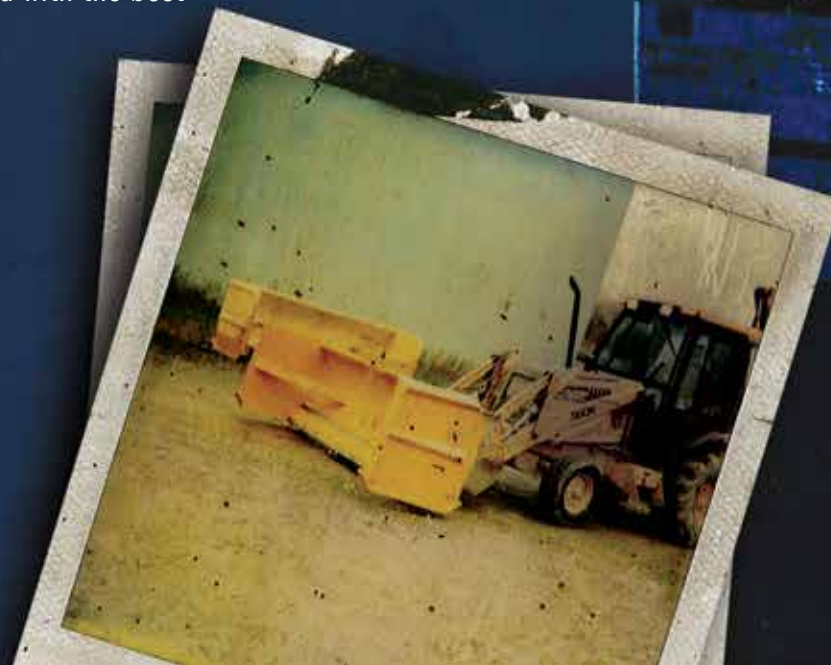
In the summer of 1991, Pro-Tech's founder Mike Weagley began a small welding and fabrication business out of his parent's garage in Rochester, NY. In time, that very same company would become the creator of the Sno Pusher and ultimately, North America's largest containment snow plow manufacturer.

That legacy continues today with our commitment to innovate and build the most durable, long lasting snowplows that do the job right. It's no coincidence that many of our plows are still being used twenty years after they're made.

At Pro-Tech, we live and breathe winter all year round; creating new products, building inventory, and delivering on our promise to provide you with the best the industry has to offer.

Pro-Tech: Built to humble Mother Nature.

[snopusher.com](http://snopusher.com)  
(844) 204-8211



Mike Weagley  
Pro-Tech Founder





# INDUSTRY LEADER

We might have started as a small fabrication shop but today Pro-Tech is an industry leader, supplying thousands of companies across North America with the best snow plows in the business.

While we have certainly grown over the years, our commitment to excellence never ceases. Every snow plow that leaves our world class production facility is manufactured with pride, service and a commitment to you, all backed by our 10 year warranty.

At Pro-Tech, we know how important your job is to your community. While often underappreciated, a snow removal professional plays a critical role in keeping everyday life moving during a winter storm. You need equipment that works and refuses to break. We know you won't settle for products that aren't built as tough as you are. So, if you keep pushing snow, we'll keep striving to bring you the best snow plows on the market.

AN INDUSTRY LEADING

## 10 YEAR WARRANTY

ON ALL PRO-TECH SNO PUSHERS

INCREASE PRODUCTIVITY  
OVER CONVENTIONAL BLADES OR BUCKETS

**500%**

INCREASE YOUR PROFIT  
ONE SNO PUSHER DOES THE WORK OF

**4 TRUCKS**

CUSTOMER SATISFACTION  
FOR PRODUCTS IS AT AN ALL TIME HIGH OF

**96%**



#SNOFIGHTER

# WINTER IS COMING

This isn't a TV show, this is real life. In our world when it snows, life as we know it can stop. Long commutes, accidents, school closings, and delays are just some of the issues that people must deal with when the 'white stuff' starts falling.

Every winter, cities and towns across North America rely on snow plow companies to keep their communities moving. It's often a thankless job and requires long hours, hard work, and the ability to think quickly behind a steering wheel. Pro-Tech has a nickname for these snow plow companies: Sno Fighters. For the past several winters, our team has worked hard to recognize Sno Fighters and the important role they play when snow arrives.

This year, Pro-Tech held our annual contest, not only highlighting Sno Fighters but also crowning a Snow Removal Company of the Year. The lucky winner received a massive trophy and some free press in industry publications.



## JOIN THE CLUB

Sign up to be part of the #SnoFighters Club and receive prizes, product testing opportunities, and much more. Visit [snofighters.com](https://snofighters.com). To all of the Sno Fighters who participated, thank you.





# PRO-TECH QUALITY

## 1. PREMIUM STEEL

Pro-Tech uses the highest quality steel that is offered for its kind by manufacturers. Basically, this means that the steel in your Sno Pusher is the best of the best.

## 2. EDGES THAT LAST

From our standard rubber edges to the new steel-infused rubber Fusion Edge, our plowing edges are made of the highest quality materials and designed to exceed expectations when it comes to surface outcome and durability.

## 3. FULLY WELDED

Fully Welded. We fully weld our snow pushers, ensuring strength and durability. Some competitors only stitch weld their products. Fully welded seams also reduce corrosion from the inside out giving you a snow pusher that will last for years.

## 4. HIGH QUALITY PAINT

Pro-Tech uses the highest quality primers and paints on all of our Sno Pusher products. These coatings are at least 4 mil thick and are qualified using a one thousand hour salt spray test.

## 5. TOUGH WEAR SHOES

Pro-Tech shoes are abrasion and impact resistant and through-hardened, which allows for consistent wear over the entire life of the shoe.

## 6. REINFORCED CHASSIS

While some competitors chassis are made primarily out of cut or bent sheet metal, Pro-Tech uses reinforced structural steel channels to provide maximum structural strength.



### PICK YOUR PUSHER:

Click the “SELECT PUSHER” button on [SnoPusher.com](https://snopusher.com) to find the best snow pusher for your machine



# RUBBER EDGE

SNO PUSHER



Since its introduction 20 years ago, the Rubber Edge Sno Pusher by Pro-Tech has been the most popular containment plow in the industry. The rubber edge has the perfect combination of hardness, stiffness, and flexibility to clear snow on a variety of surfaces.

- Most versatile plow, can be used on multiple surface types
- Easy to operate and maintain
- Surfaces sensitive to steel edges

# FUSION EDGE

SNO PUSHER

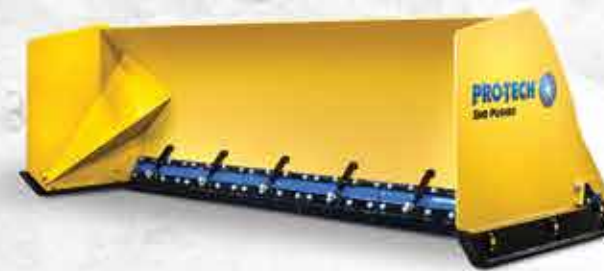


A snow pusher that offers incredible surface outcome, durability and ease of use. The Fusion Edge Sno Pusher features a first-of-its-kind cutting edge, wear shoes, and floating coupler that will leave your properties spotless and your customers impressed.

- Steel infused rubber cutting edge works great on all types of snow
- Pro Float Coupler moves in all directions, allowing the edge to keep contact at all times
- Fast Attack Shoes can adjust cutting edge depth in seconds
- Industry-first edge can trip over obstacles such as manhole covers

# STEEL EDGE

SNO PUSHER



Our Steel Edge Sno Pushers are excellent at removing hard pack snow. Parking lots that get a lot of traffic are great sites for the Steel Edge to shine. The ability to easily remove hard pack can also result in savings of both time and money by lessening the need to apply salt or chemicals.

- Ideal for asphalt surfaces with hardpack snow and ice
- Pivoting wear shoes allow for aggressive scraping when required
- Unique poly hinge design offers more durability and less maintenance than some competitive containment plows.

# PULLBACK

SNO PUSHER



The Pullback Sno Pusher lets an operator 'pull' snow away from loading docks, doors and other tight spaces that traditionally had to be cleared with a truck plow, or even a shovel! With the 'pulling' functionality, a Sno Pusher becomes even more versatile on a job site.

- Pullback edge pulls snow away from tight places
- Surfaces sensitive to steel edges
- Can decrease or even eliminate the need to shovel in tight spaces

# LOW PROFILE

SNO PUSHER



Clear snow from underneath parked trailers, especially the fifth wheel pins. The Low Profile is 30" tall and 18' wide. Its offset design allows for 6' of reach under obstacles and windrows snow to the side.

- Low profile allows for clearance of fifth wheel pins under parked trailers
- Offset design has potential for 6' of reach under trailers
- Windrowing
- Efficiently discharges snow

# SUPER DUTY

SNO PUSHER



The Super Duty Sno Pusher is the largest containment plow in the industry and is best paired with larger prime movers (4+ yd bucket capacity). While very popular among airports and distribution centers the Super Duty Sno Pusher can also be used in construction or agricultural applications.

- Use on large prime movers (4+ yard bucket capacity)
- Popular at airport and distribution centers
- Can find second use in moving grain, wastewater, and aggregate
- Industry's biggest containment plow - up to 57 yd capacity

# FOLDOUT

SNO PUSHER



The Foldout Sno Pusher allows for easy navigation of properties that have many obstacles. In addition, the Foldout provides operators with a "road-friendly" Sno Pusher that can be used on multiple sites during the course of a winter event.

- Folds to 9' for transport
- Can be driven from site to site
- Easy manual folding (hydraulic option available)

# V PLOW

SNO PUSHER



The V Plow Sno Pusher is the perfect solution for clearing sidewalks and is used by many municipalities. The V Plow has the classic "V" shape to split and windrow snow clearly off sidewalks.

- Clear snow from sidewalks and pathways
- Design splits and windrows snow
- Robust construction allows for miles of municipal sidewalk clearing



# TURF PUSHER



This lightweight but durable plow smoothly glides over natural and artificial playing fields with minimal disruption to the surface. The Turf Pusher contains and stacks snow and allows customers to keep their playing fields open all year round.

- Clear snow from natural and artificial playing fields and field covers
- For artificial turf the Turf Pusher clears snow with minimal disruption of crumb rubber
- Eliminates game or practice delays caused by snow
- Pin-on coupler allows for multiple connection options

# FORKLIFT

SNO PUSHER



The Forklift Sno Pusher allows you to turn your company's forklift into a snow removal machine. Perfect for loading docks, and parking spots. Often used as an emergency backup to a primary snow removal option.

- Transforms forklift into a snow removal machine
- Perfect as a backup snow plow
- Can be used with most commercial forklifts
- Rubber edge squeegees snow from surface

# SNO BLADE



The Sno Blade is a HEAVY DUTY Skid Steer snow plow. Built using the same structural steel found in our Sno Pushers, the Sno Blade is engineered for use on skid steers in commercial applications. It can be a great addition to your fleet or as a stand-alone tool. In addition, the Sno Blade's Active Coupler oscillates, allowing it to contour to surface variations resulting in a better scrape.

- Designed for heavy duty commercial applications
- Coupler oscillates to contour to surface irregularities
- Bolt-on wings allow for both windrowing and containment of snow
- Blade pivots left or right 30 degrees
- 3 year limited warranty

# SNO BASKET



The Sno Basket is designed to help you haul and relocate snow with ease. The slots on the bucket allow customers to compress and collect the maximum amount of snow while also allowing water to escape when moving slush. The Sno Basket provides you with much greater capacity and less weight than most standard buckets. Multiple connection types are available and each one is custom designed to meet your specific needs.

- Easily haul and relocate snow
- Design allows for greater snow capacity than standard bucket
- Custom designed for your specific machine and needs

NEW PRODUCT

# PRO CLEATS



The Pro Cleats thin profile cuts through snow and the aggressive tread pattern is designed specifically for use in slippery snow conditions. Some customers have reduced plowing time by 50% with these skid steer tires.

Skid Steer tires designed for use in landscaping or construction will under perform a dedicated snow tire in the winter. Inadequate tires result in spinning tires, short pushes, and a frustrated operator. The aggressive tread pattern gives your skid steer incredible grip on the plowing surface. It is common to see significant improvements in productivity.

- Narrow design cuts through snow
- Tread pattern designed for maximum traction
- Engineered for low temperatures
- Can be used with most skid steers



VISIT [SNOPUSHER.COM](https://www.snopusher.com) TO ORDER YOUR PRO CLEATS

**“IT’S A NIGHT AND DAY DIFFERENCE WHEN PLOWING.”**

*Corey Parker, Greenside Lawn Care*

**“REDUCED PLOWING TIME BY 50%”**





# THE ORIGINAL SNO PUSHER

The one that started it all. Considered by many to be the most popular containment plow in North America, the Rubber Edge Sno Pusher revolutionized the industry when it was first introduced in 1993.

This model features Pro-Tech Rubber, which is not only extremely durable but also versatile and allows contractors to tackle multiple types of surfaces.

- Perfect for most types of snowfall
- Works great on surfaces sensitive to steel edges
- Easy to operate and maintain
- Wear shoes are hardened, abrasion & impact resistant

# RIGHT SHOES. RIGHT JOB.

Pro-Tech offers several wear shoe options to help tackle certain types of properties. Visit the “Parts” section of Snopusher.com to find out what options are available for your Sno Pusher.

- Super Duty Shoes: Double the longevity of standard shoes
- Self Leveling Shoes: Help maintain a level pushing position
- Poly Shoes (UHMW): Perfect for sensitive surfaces

# EXTEND YOUR EDGE

The rubber cutting edge on your Sno Pusher can be reversed and flipped as it wears, giving the customer a total of 4 edges that can be used for snow clearance.

# DOUBLE THREAT

All new skid steer models now come with mounting holes to easily add a Pullback Kit.

INDUSTRY LEADING WARRANTY

10 YEARS



DOWNLOAD OUR FREE  
PRODUCTIVITY STUDY  
CLICK THE “WHY USE A PUSHER”  
BUTTON ON SNOPUSHER.COM

# RUBBER EDGE

SNO PUSHER



SKID STEER MODEL



LOADER MODEL

AVAILABLE FOR:





# FUSION EDGE

SNO PUSHER



VISIT [FUSIONSNO PUSHER.COM](http://FUSIONSNO PUSHER.COM)  
TO SEE THIS PRODUCT IN ACTION



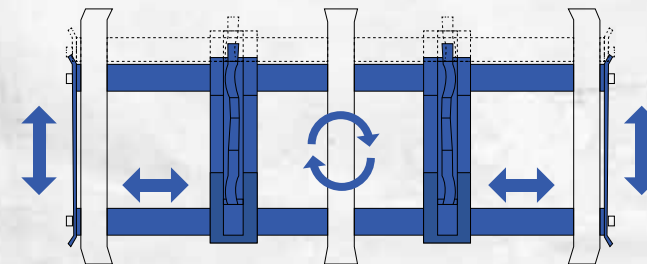
SKID STEER



LOADER MODEL

## UP. DOWN. LEFT. RIGHT.

The Pro Float Coupler not only moves up and down but also sideways and oscillates. This additional movement allows the plow to freely float without obstruction, improving surface outcome.



## KICK IT UP A NOTCH

Sometimes a property requires something more than just a standard snow pusher. It requires a snow plow of a higher caliber. That plow is the Fusion Edge Sno Pusher. This first of its kind containment plow is taking the industry by storm, so much so that it sold out last year before the season even started.

- Steel-infused rubber cutting edge works great on all types of snow
- Pro Float Coupler moves in all directions, allowing the edge to keep contact at all times
- Fast Attack Shoes can adjust cutting edge depth in seconds
- Industry-first edge can trip over obstacles such as manhole covers

## THE BEST OF BOTH WORLDS

The Fusion Edge features a steel-infused rubber cutting edge, which allows you to clear all types of snow from wet and heavy to icy hard pack.

## INGENIOUSLY SIMPLE

At Pro-Tech, our philosophy is to craft products that are easy to operate and maintain. No fancy bells or whistles here. Just incredible performance in an ingeniously simple package.

**“WHEN I FIRST SAW IT, I KNEW IT WAS A GREAT IDEA.”**

IT REALLY PROVED ITSELF BY SCRAPING LIKE A STEEL WITH THE ADDED BONUS OF FLEXING LIKE A RUBBER EDGE.”

*Jamie Carncross  
Pro Scapes*

**40% - 50%**  
**GAINS IN PRODUCTIVITY**





# A PERFECT SOLUTION FOR HEAVY TRAFFIC HARD PACK

The Steel Edge Sno Pusher effectively attacks asphalt surfaces, especially those that are covered in hard pack snow and ice. Unlike other steel edge containment plows that have complicated trip edges, the Steel Edge has minimal moving parts and uses a corrosion resistant polyurethane hinge instead of metal springs or levers.

- Allows for easy removal of hard pack snow and ice
- Pivoting wear shoes and sectioned cutting edge contour to surface
- Poly trip edge provides for smooth tripping action
- Poly hinge is chemical and salt resistant

# NO LIMITATIONS ON STACKING OR SPEED

Customers can push and stack snow confidently thanks to the robust design of the Steel Edge Sno Pusher.

# BREAK UP HARDPACK WITHOUT BREAKING THE BANK

Many competitive steel edge containment plows on the market consist of complicated parts and offer in some cases more “bells and whistles” than what is required to get the job done. The Steel Edge Sno Pusher is a containment plow that offers simplicity, performance, all at a reasonable retail price.

**“I LOVE THE STEEL EDGE SNO PUSHER.  
I PERSONALLY RUN IT. ITS PUSHING AND  
SCRAPING CAPABILITIES ARE INCREDIBLE.”**

*Jeff Grasteit  
Grasteit's Landscape Construction Design*



## HOW'S IT MADE?

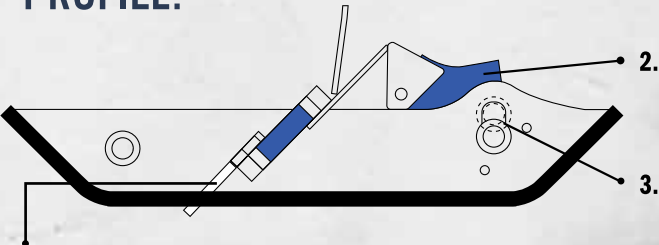
Click the ‘Why Use Pro-Tech’ button on [snopusher.com](http://snopusher.com) to find out what really goes into making a Sno Pusher

# STEEL EDGE

SNO PUSHER



## WEAR SHOE/CUTTING EDGE PROFILE:



1. The cutting edge works in tandem with the poly suspension and pivoting wear shoes to improve scraping capabilities. The blue poly hinge is significantly cheaper to maintain and can have a much longer life than the standard springs, levers, and other components found on competitor plows.
2. The poly suspension flexes as down pressure is applied.
3. Pivoting wear shoes help conform to uneven surfaces.



LOADER MODEL



SKID STEER MODEL

AVAILABLE FOR:



SEE FULL PRODUCT SPECS ON PAGE 42



# PULLBACK

SNO PUSHER



**BUY LOCAL.  
FIND A DEALER**

Visit the dealer locator on [snopusher.com](http://snopusher.com)  
to find your closest Pro-Tech dealer



## PULLBACK OR PUSH FORWARD

The Pullback Sno Pusher relieves the challenges and frustrations of clearing snow away from hard-to-reach places.

This versatile model can operate as a Rubber Edge Sno Pusher but with one quick change of position, address tight areas that a standard containment plow cannot.

In addition, the Pullback Sno Pusher can save customers time and money by lessening the need to shovel or operating smaller equipment in tight areas.

- Pulling snow away from loading docks, doors, and other tight areas
- Uses Pro-Tech Rubber-requires the use of pure compounds resulting in longer wear life
- Surfaces sensitive to steel edges
- Safe on all conditions

## IT'S BETTER INSIDE



The Pullback Sno Pusher lessens and can even eliminate the time required to shovel snow in hard-to-reach areas, resulting in savings of both time and labor. Plus, who wants to spend all that time outside in the cold when you can be in your machine's heated cab?

## THE PULLBACK'S NEW FEATURE

The Pullback Sno Pusher now comes with an additional containment guard, which allows customers to contain more snow when in the "pullback" position.

The guard can also be purchased separately for those customers that have previous Pullback models.

## A KIT TO CONVERT

Pro-Tech offers customers a kit to convert their Skid Steer Rubber Edge Sno Pusher into a Pullback model. Ask your local dealer for more information.





# GET LOW & CLEAR SNOW UNDER SEMI-TRUCK TRAILERS

The Low Profile Angle Sno Pusher is a specialized model that allows customers to clear snow from underneath parked trailers and other hard-to-reach areas.

The ability to windrow with the Low Profile Angle Sno Pusher can also be useful in situations where dispersing snow to the side is required.

- Allows for clearance of fifth wheel pins under parked trailers
- Offset design has potential for 6' of reach under trailers
- 30 degree angle efficiently discharges snow
- Can be used for windrowing

# LOOK AT YOUR SHOES:

Pro-Tech wear shoes are the most durable in the industry but will eventually need to be changed.

It's recommended that shoes worn at or below 1/4" should be replaced. Running shoes that are worn too thin can potentially damage your Sno Pusher.

**"DURING THE FIRST STORM WE NOT ONLY CLEARED UNDER TRAILERS AT AN EXTREMELY FAST RATE, BUT WE USED IT FOR ALL ROADWAYS TOO."**

**WE CUT OUR EQUIPMENT AND LABOR USAGE BY MORE THAN 50%!"**

*Steve Wagner,  
Wagner Landscaping*



# GEAR UP.

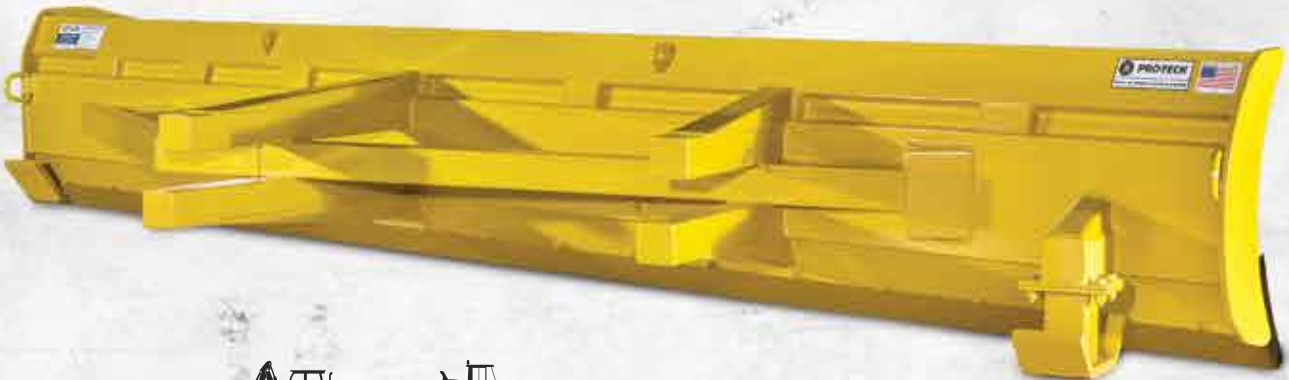
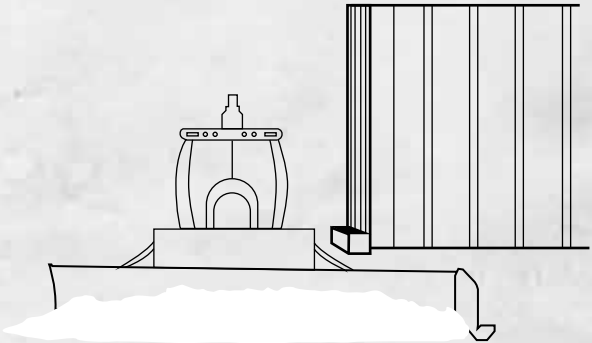
Visit the GEAR section of [snopusher.com](http://snopusher.com) and start plowing in style with Pro-Tech branded shirts, hats, gloves, and more!

# LOW PROFILE ANGLE

SNO PUSHER



# CLEAR SNOW EASILY UNDER TRACTOR TRAILERS BEDS



AVAILABLE FOR:





“HANDS DOWN,  
**THE BEST** PUSHER WE  
HAVE EVER OWNED.”

Josh Godfroy, Coastal Landscaping

**PRO-TECH®**  
SNO PUSHER

**PRO-TECH®**  
FUSIONEDGE  
SNO PUSHER

**FUSIONEDGE**  
SNO PUSHER



# SUPER DUTY

SNO PUSHER



## JOIN THE COMMUNITY

Follow us on Facebook, Instagram, YouTube, Twitter, and LinkedIn to talk with other **#SnoFighters** and get the latest Pro-Tech updates.



The Super Duty Sno Pusher is the Goliath of containment plows. With the largest model 30' feet in width and able to contain up to 57 yards of snow, the Super Duty Sno Pusher is ideal for larger equipment (4+ yard bucket capacity).

It can also find a second use in construction or agricultural applications.

- 19-57 yard capacity
- Works great on very large properties such as airports and distribution centers
- Can find second use in moving grain, wastewater, aggregate, etc.
- Comes with Super Duty Wear Shoes made from Quard 550®
- Stands over 5 ft tall
- 2" x 12" cutting edge

## THE FACTS

The Super Duty stands 5 feet tall, can weigh up to 4 tons, and contain 35% more snow than our Rubber Edge loader models.

## PROTECT YOUR EDGE

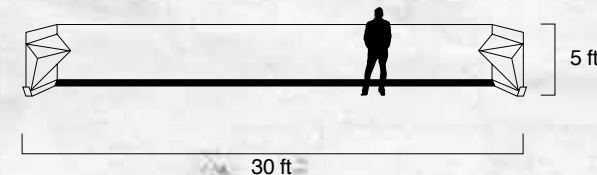
Whether on a property during the winter or in off-season storage, make sure the cutting edges on your Sno Pusher are not exposed to direct sunlight. Extensive exposure to sunlight can prematurely wear the cutting edge on Rubber Edge Sno Pushers and the poly hinge on Steel Edge Sno Pusher.

## MAX SNOW CAPACITY

# 57 YARDS

## DOUBLE THE DURABILITY

The Super Duty Sno Pusher features additional bracing on the connection (1), sideplates (2), and cutting edge (3) to handle the forces of the industry's most powerful wheel loaders.





# READY TO MOVE

The Foldout Sno Pusher is the solution for customers who want to clear snow from multiple properties with just one machine and plow. Folding to under 9' wide, the Foldout makes transport easy.

It can also help when navigating properties with obstacles such as gates, bollards, and narrow wall passages.

- Folds to 9' for easy transit
- Ideal for properties that are difficult to maneuver
- Hinge system allows for easy folding of the wings
- Uses Pro-Tech Rubber-requires the use of pure compounds resulting in longer wear life

# ONE UNIT FOR MULTIPLE LOTS

The Foldout Sno Pusher eliminates the need for multiple Sno Pushers across different properties by making it easy for operators to travel from lot to lot during a snow event.

# HYDRAULIC OPTION AVAILABLE

Sno Pusher comes standard with hydraulic mounts.

# OFF-SEASON MAINTENANCE

During the off-season make sure that your Sno Pusher is stored in a flat, dry area away from high grass, which can grow around the unit and cause corrosion.



# CONCERNED ABOUT WIDELOAD TICKETS

Wide-load laws can differ from state to state. Check with your local law enforcement to find out what they allow.



VISIT [YOUTUBE.COM/PROTECHMFG](https://www.youtube.com/protechmfg) TO WATCH A VIDEO ON HOW TO INSTALL THE HYDRAULIC KIT.

# FOLDOUT

SNO PUSHER



TRANSPORT POSITION



PUSHING POSITION

AVAILABLE FOR:





# V PLOW

SNO PUSHER



## STAY INFORMED:

Visit [snopushernews.com](http://snopushernews.com) to subscribe to our newsletter and stay informed with the latest product announcements, maintenance tips and tricks, contests, and much more.



## A CLEAR SPLIT

The V Plow Sno Pusher is the perfect solution for clearing sidewalks. It comes in 40", 48", 60", 72", widths and is a hit with municipalities and their sidewalk crews. The V Plow has the classic "V" shape to split and windrow snow cleanly off of sidewalks. The four standard sizes come complete with a universal quick coupler.

- Clear snow from sidewalks and pathways
- Minimal moving parts and maintenance
- High quality primer and paint
- Windrow snow
- 10 Year Warranty

## CLEAR SIDEWALKS WITH CONFIDENCE

The V Plow's fully welded robust chassis allows customers to cut into deep snow that often accumulates on sidewalks and pathways without concern of breakdowns that can be associated with smaller less durable competitor options.

**"MY COMPANY REALLY APPRECIATES PRO-TECH'S PROMPT ACCOMMODATING SERVICE, THEIR EXTREME PROFESSIONALISM, SUPERIOR PRODUCT, AND COMMITMENT TO 100% TOTAL CUSTOMER SATISFACTION."**

*Sean Fico  
AP Enterprises*





SNOW GONE. GAME ON!


The Pro-Tech Turf Pusher is the first snow pusher designed specifically for clearing sports turf fields. This lightweight but durable snow pusher smoothly glides over both natural and artificial turf and field covers. Customers can now keep their sports turf fields operational at all times during the winter.

The Turf Pusher takes seconds to connect, saving time and minimizing labor associated with hydraulics and couplers. Multiple connection types are also available (Toro, Bobcat, John Deere, etc.). Unlike conventional plows and brooms, the Turf Pusher has no moving parts, which minimizes or can even eliminate the time spent repairing equipment.

- Clear snow from turf sports fields
- Minimizes displacement of crumb rubber
- Easy to operate and maintain
- Eliminate game or practice delays caused by snow
- Multiple connection types available

ATHLETES LOVE THE TURF PUSHER

Not every high school or college has the proper equipment to clear snow from their sports field, which often results in players picking up shovels. The Turf Pusher allows athletes to focus on their sport instead of their shoveling technique.

 **All Star Athlete** @AllStarAthlete · 2h  
Is it possible to be in love with a snow plow?

OUR FANS KEEP THEIR FANS HAPPY.

“WE PURCHASED 2 OF THE 8 FOOT TURF PUSHERS FOR OUR 5600 TOOLCATS AND ARE VERY PLEASED WITH THEM.”

Chuck Dietz, Maintenance Tech  
University of Notre Dame



DOWNLOAD OUR FREE  
PRODUCTIVITY STUDY  
VISIT TURFPUSHER.COM

TURF PUSHER



NEW MACHINE? NO PROBLEM.

The Turf Pusher’s new pin-on coupler design allows you to easily swap out connection types if you change machines. Choose from over 12 connection types including, universal, euro, John Deere, Toro and more.



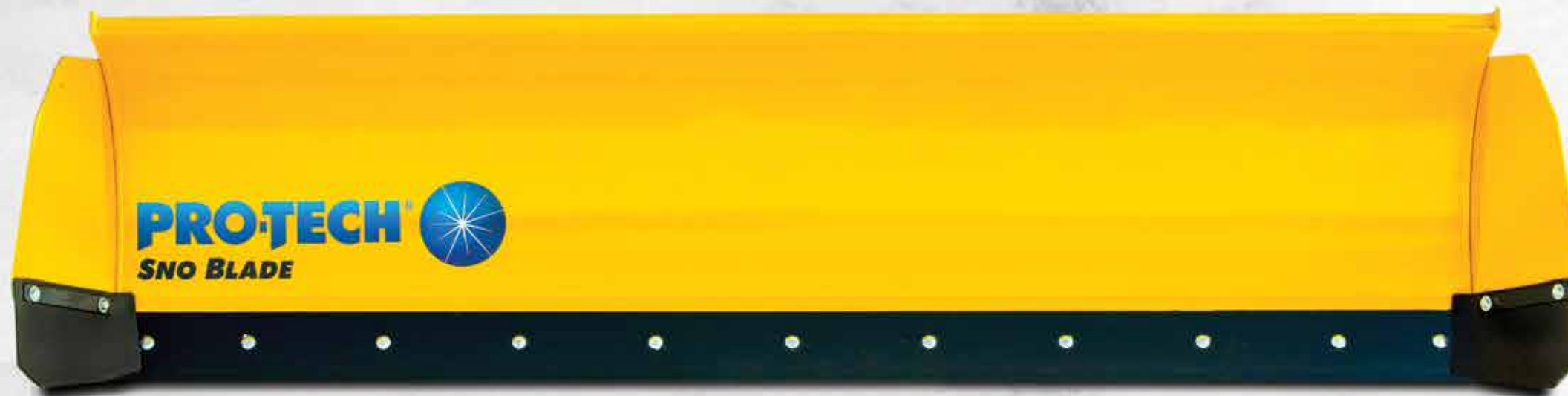
AVAILABLE FOR:



# SNO BLADE



VISIT [PROTECHSNOBLADE.COM](http://PROTECHSNOBLADE.COM)  
TO SEE THE SNO BLADE IN ACTION



## INNOVATION WITH AN EDGE

For over 20 years Pro-Tech has built a reputation for building innovative containment plows of the highest quality. That reputation continues with our new hydraulic wing plow, the Sno Blade.

Built using the same structural steel found in our Sno Pushers, the Sno Blade is engineered specifically for use on Skid Steers in heavy commercial applications. Increase your Skid Steer's snow clearing capabilities with confidence with the Sno Blade.

- Valuable stand alone tool or for use in assisting containment plows
- Blade pivots left or right 30 degrees to windrow snow
- The ACTIVE Coupler pivots at the center to conform to surface irregularities
- Built using heavy gauge materials and structural steel
- 3 Year Limited Warranty

## CUTTING EDGE CRAFTSMANSHIP

The craftsmanship that goes into Pro-Tech products is well known throughout the snow and ice industry, with many of our products still in use 10 or even 20 years after purchase. The Sno Blade uses reinforced structural steel channel, has fully welded seams, and is backed with a 3 year warranty.

## ACTIVE COUPLER

The heavy duty A-frame assembly allows for angling the blade 30 degrees left or right for windrowing snow. In addition, the frame can oscillate 10 degrees, allowing operators to adjust down pressure as needed. The Sno Blade features a simple, sleek design.

## EXPAND YOUR TOOLBOX

The Sno Blade enhances your snow clearing capabilities by allowing you to remove snow on a variety of property types and from tight spaces. It can be used as a valuable stand alone tool or paired with your existing containment plow fleet.





# WEAR PARTS

Changing wear parts should not be a regular occurrence and can be especially unpleasant during the middle of a winter storm. That's why Pro-Tech Sno Pushers come with the most durable and reliable wear parts in the industry. However, even the best parts will need to be eventually changed. Here are some of the most common wear parts:



Pro-Tech uses an SBR extruded rubber, which demands the highest quality ingredients. With a durometer of 65 and a 2000 tensile strength it is the perfect blend of hardness, flexibility, and durability. The rubber does not curl or chatter. Other manufacturers or after market suppliers tend to focus on rubber hardness alone, which can limit the amount of flex the rubber has, which actually reduces the ability of the rubber to effectively clear snow.



Our standard wear shoes are made from abrasion resistant steel and are heat treated with a process that hardens the material, meaning the hardness of the shoe goes deep into the core of the material, rather than remaining at the surface. Our standard wear shoes are also impact resistant, meaning that have an elasticity factor which allows them to flex on impact without breaking or cracking.



The blue poly urethane that Pro-Tech uses for the trip-edge on our Steel Edge Sno Pushers is significantly cheaper to maintain and can have a much longer life than the standard springs, levers, and other components found on other trip-edge containment plows. The poly hinge comes in 24" sections that are easier and safer to replace than many competitor options.



The 24" sectioned cutting edges are made of abrasion resistant steel and work in tandem with the poly suspension and wear shoes to contour to surface variations. The steel cutting edge's hardness and purity is ultrasonically tested to ensure the plate has no imperfections.





# SPECIALTY PARTS

Pro-Tech offers several specialty parts for Sno Pushers that can help operators address specific lot conditions and situations. Access Pro-Tech's parts finder on [snopusher.com/parts](https://snopusher.com/parts) to identify which parts are available for your Sno Pusher.



SUPER DUTY SHOE

Our Super Duty shoes are blue and made from the same bullet-proof material used in armored vehicles and are nearly double the Brinell rating of our standard shoes. They are also through-hardened to ensure a consistent hardness and even wear.

- Provides the highest wear characteristics and longest life
- Double the Brinell rating of our standard wear shoes



POLY SHOES (UHMW)

Our Poly Shoe is a polycarbonate (UHMW) padded shoe, which is ideal for surfaces too sensitive for steel shoes. The poly material is slick and minimizes friction and wear to the plowing surface. The pads are replaceable. Great for parking garage membranes, pavers, etc.



EXTENDED OR SELF LEVELING SHOE

Our self-leveling shoes are designed to keep your Sno Pushers level to the plowing surface with an extra 16 inches of length. Keeping the unit level will result in a prolonged cutting edge and shoe life. Self-leveling shoes are available in both standard and Super Duty material.

- Keeps the Sno Pusher level and balanced, creating an even amount of pressure throughout the length of the shoe
- Eliminates excess down pressure on the back of the shoe
- Increased surface area actually increases the lifespan of the shoe



LEVEL GAUGE

Running your Sno Pusher level ensures optimal performance of the unit and the longest possible life of your wear shoes and rubber cutting edge. Pro-Tech's level gauge mounts to the Sno Pusher's sideplate and is an easy and quick way for operators to know if they are running their Sno Pusher level.

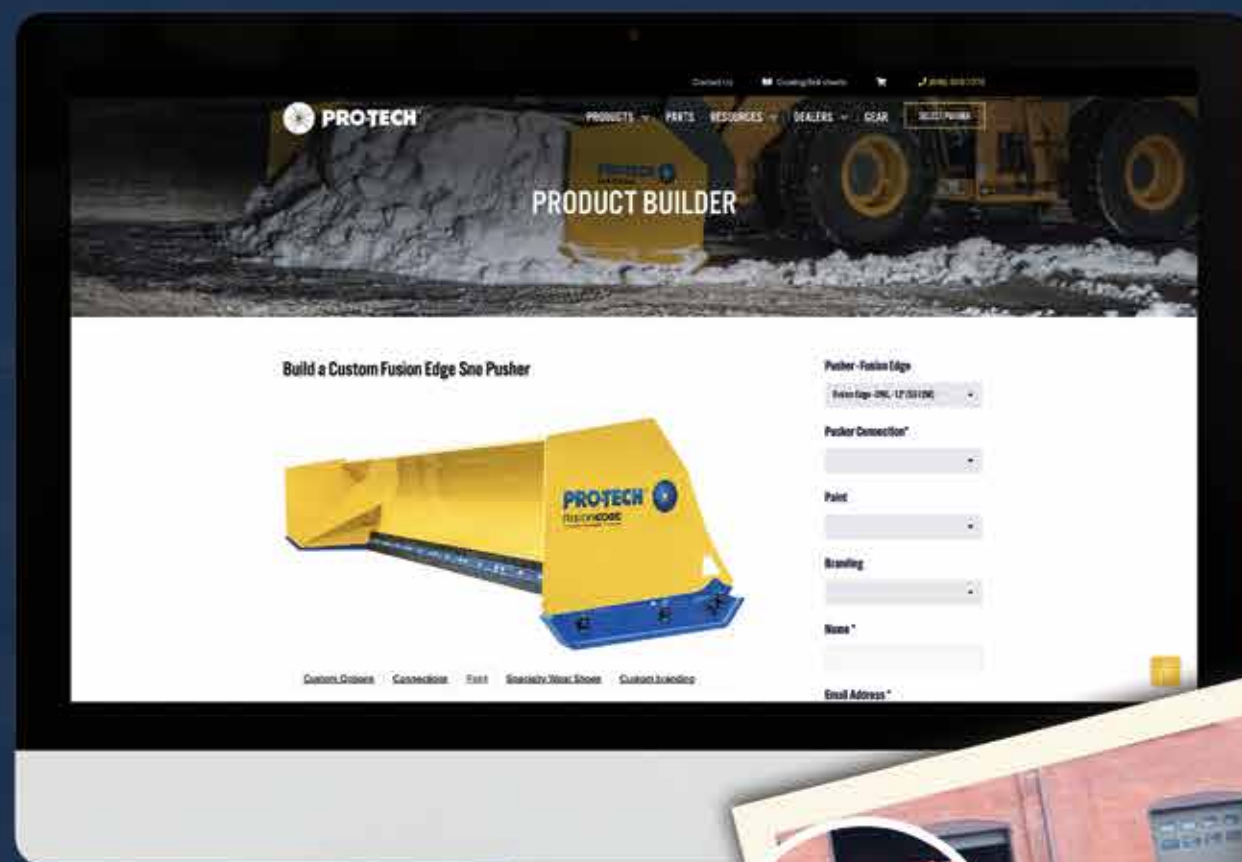




# PRO-TECH'S CUSTOM WEBSITE PRODUCT BUILDER

Whether it's for branding purposes or to improve your plowing performance, Pro-Tech offers several custom options to make your snow pusher truly your own.

Visit any of the product pages on SnoPusher.com to begin building your snow pusher today! At Pro-Tech, we offer several options you can choose from to personalize your snow pusher. From the connection to the wear shoes to the color; the choice is yours!



## PICK YOUR CONNECTION

Pro-Tech offers a number of custom connections for a wide variety of prime movers. Pro-Tech also offers a "blank back" design, which allows customers to install their own connection.



## PAINT IT WITH YOUR COMPANY COLORS

Have a specific company color that you use for your equipment? Pro-Tech can paint your snow pusher/snowplow in a variety of colors including red, blue, white, green, and even pink!



## BRAND IT

Take your company branding to the next level or even number your snow pushers. Pro-Tech's state-of-the-art plasma cutting table can cut-out your company logo and any other design into your Sno Pusher's sideplate.

Pro-Tech can also help you to create custom high-quality vinyl decals that can be applied to the sides of your Sno Pusher.



GET YOUR  
**QUOTE TODAY!**

[snopusher.com/showroom](https://snopusher.com/showroom)



# PRODUCT SPECIFICATIONS

## RUBBER EDGE SNO PUSHER

LOADER: Connection Type: Quick Change Attachment System (Post Style)								
	SP10L	SP12L	SP14L	SP16L	SP18L	SP20L	SP24L	SP30L
Width:	10'	12'	14'	16'	18'	20'	24'	30'
Approx. Weight:	1655lb	1815lb	1938lb	2134lb	2387lb	2573lb	2963lb	3821lb
Snow Capacity:	12yd	15yd	18yd	21yd	23yd	26yd	31yd	38yd
Machine HP:	75 hp+	100 hp+	120 hp+	125 hp+	140 hp+	140 hp+	150 hp+	150 hp+

COMPACT WHEEL LOADER: Connection Type: Reinforced universal quick coupler				BACKHOE: Quick Change Attachment System (Post Style)			
	SP08M	SP10M	SP12M		SP10B	SP12B	SP14B
Width:	8'	10'	12'	Width:	10'	12'	14'
Approx Weight:	990lb	1150lb	1242lb	Approx. Weight:	1377lb	1535lb	1665lb
Snow Capacity:	7yd	9yd	11yd	Snow Capacity:	9yd	11yd	13yd
Machine HP:	60 hp+	60 hp+	80 hp+	Machine HP:	50 hp+	70 hp+	85 hp+

SKID STEER: Connection Type: Universal quick coupler (Post style connection available)				
	SP06S	SP08S	SP10S	SP12S
Width:	6'	8'	10'	12'
Approx. Weight:	650lb	800lb	950lb	1100lb
Snow Capacity:	5yd	7yd	9yd	11yd
Machine HP:	35 hp+	45 hp+	70 hp+	85 hp+

COMPACT TRACTOR: Connection Type: Quick Change Attachment System (Universal quick coupler available)					
	SP06C	SP07C	SP08C	SP09C	SP10C
Width:	6'	7'	8'	9'	10'
Approx. Weight:	437lb	476lb	516lb	555lb	595lb
Snow Capacity:	3yd	3.5yd	4yd	4.5yd	5yd
Machine HP:	30 hp+	35 hp+	40 hp+	45 hp+	50 hp+

## FUSION EDGE SNO PUSHER

LOADER: Connection Type: Pro Float Bolt-On Coupler System			
	SG12L	SG14L	SG16L
Width:	12'	14'	16'
Approx. Weight:	2495lb	2735lb	2975lb
Snow Capacity:	15yd	18yd	21yd
Machine HP:	100 hp+	120 hp+	125 hp+

COMPACT WHEEL LOADER / BACKHOE / SKID STEER: Pro Float Bolt-On Coupler System			
	SG08M	SG10M	SG12M
Width:	8'	10'	12'
Approx. Weight:	2255lb	2495lb	2735lb
Snow Capacity:	8yd	10yd	12yd
Machine HP:	50 hp+	60 hp+	70 hp+

## STEEL EDGE SNO PUSHER

LOADER: Attachment Type: Quick Change Attachment System (Post Style)					
	IS10L	IS12L	IS14L	IS16L	IS18L
Width:	10'	12'	14'	16'	18'
Approx. Weight:	2300lb	2400lb	2550lb	2700lb	2950lb
Snow Capacity:	13yd	16yd	19yd	22yd	24 yd
Machine HP:	75 hp+	100 hp+	120 hp+	125 hp+	140 hp+

BACKHOE: Attachment Type: Quick Change Attachment System (Post Style)			
	IS10B	IS12B	IS14B
Width:	10'	12'	14'
Approx. Weight:	1500lb	1650lb	1800lb
Snow Capacity:	10yd	12yd	14yd
Machine HP:	50 hp+	70 hp+	85 hp+

SKID STEER: Attachment Type: Universal Skid Steer Coupler (Quick change attachment available)				
	IS06S	IS08S	IS10S	IS12S
Width:	6'	8'	10'	12'
Approx. Weight:	800lb	950lb	1100lb	1250lb
Snow Capacity:	6yd	8 yd	10 yd	12 yd
Machine HP:	35 hp+	45 hp+	60 hp+	85 hp+

## PULLBACK SNO PUSHER

SKID STEER: Attachment Type: Universal Skid Steer Coupler (Quick change attachment available)				
	PB06S	PB08S	PB10S	PB12S
Width:	6'	8'	10'	12'
Approx. Weight:	820lb	975lb	1130lb	1280lb
Snow Capacity:	5yd	7yd	9yd	11yd
Machine HP:	35 hp+	45 hp+	70 hp+	85 hp+

## LOW PROFILE ANGLE SNO PUSHER

LOADER / BACKHOE: Connection Type: Quick Change Attachment System (Post Style)	
	LP18L
Width:	18'
Approx. Weight:	2420lb
Machine HP:	100 hp+



SUPER DUTY SNO PUSHER

LOADER: Connection Type: Quick Change Attachment System (Post Style)								
	SD10L	SD12L	SD14L	SD16L	SD18L	SD20L	SD24L	SD30L
Width:	10'	12'	14'	16'	18'	20'	24'	30'
Approx. Weight:	2800lb	3300lb	3800lb	4300lb	4800lb	5400lb	6400lb	8400lb
Snow Capacity:	19yd	23yd	27yd	31yd	35yd	39yd	47yd	57yd
Machine HP:	100 hp+	120 hp+	140 hp+	140 hp+	170 hp+	170 hp+	180 hp+	190 hp+

FOLDOUT SNO PUSHER

LOADER: Connection Type: Quick Change Attachment System (Post Style)			
	FP14L	FP16L	FP18L
Width:	14'	16'	18'
Approx. Weight:	3450lb	3650lb	3850lb
Snow Capacity:	19yd	21yd	23yd
Machine HP:	120 hp+	125 hp+	140 hp+

V PLOW SNO PUSHER

SKID STEER: Connection Type: Reinforced Universal Quick Coupler				
	VP40S	VP48S	VP60S	VP72S
Cut Width:	40"	48"	60"	72"
Approx. Weight:	228lb	465lb	510lb	582lb
Connection Type:	mini	universal	universal	universal
Machine HP:	30 hp+	40 hp+	50 hp+	60 hp+

TURF PUSHER

SKID STEER / TRACTOR / UTV:		
Connection Type: Turf Pusher features pin-on coupler design for Skid Steers, compact tractors, and UTV's. Contact Pro-Tech for more information.		
	SP06T	SP08T
Width:	6'	8'
Approx. Weight:	318lb	408lb
Snow Capacity:	3yd	4yd
Machine HP:	30 hp+	30 hp+

SNO BLADE

SKID STEER: Connection Type: Universal Quick Coupler		
	AB08S	AB10S
Width:	109"	133"
Approx. Weight:	930lb	985lb
Machine HP:	45 hp+	70 hp+

REPLACEMENT PARTS

RUBBER EDGE SNO PUSHER

LOADER:					
WEAR SHOES		WEAR SHOE HARDWARE KITS		POLY (UHMW) WEAR PADS	
Standard	RP2010	Hardware Kit	HW1600	Poly Wear Pad	RP2130
Super Duty	RP2050				Level Gauge
Poly (UHMW)	RP2070				Yellow Acrylic Enamel (1 qt)
Self Leveling	RP2090				Yellow Acrylic Enamel (1 gal)
Self Leveling Super Duty	RP2110				Primer (1 qt)
					Primer (1 gal)

CUTTING EDGE		CUTTING EDGE HARDWARE KITS		HOLD DOWNS	
10 ft Model	RP2202	10 ft Model	HW1005	10 ft Model	RP2482
12 ft Model	RP2203	12 ft Model	HW1006	12 ft Model	RP2483
14 ft Model	RP2204	14 ft Model	HW1007	14 ft Model	RP2484
16 ft Model	RP2205	16 ft Model	HW1008	16 ft Model	RP2485
18 ft Model	RP2206	18 ft Model	HW1009	18 ft Model	RP2486
20 ft Model	RP2207	20 ft Model	HW1010	20 ft Model	RP2487
24 ft Model	RP2208	24 ft Model	HW1011	24 ft Model	RP2488
30 ft Model	RP2209	30 ft Model	HW1012	30 ft Model	RP2489

COMPACT WHEEL LOADER:

WEAR SHOES		WEAR SHOE HARDWARE KITS		POLY (UHMW) WEAR PADS	
Standard	RP2011	Hardware Kit	HW1650	Poly Wear Pad	RP2131
Super Duty	RP2051				Level Gauge
Poly (UHMW)	RP2071				Yellow Acrylic Enamel (1 qt)
Self Leveling	RP2091				Yellow Acrylic Enamel (1 gal)
Self Leveling Super Duty	RP2111				Primer (1 qt)
					Primer (1 gal)
CUTTING EDGE		CUTTING EDGE HARDWARE KITS		HOLD DOWNS	
8 ft Model	RP2201	8 ft Model	HW1251	8 ft Model	RP2481
10 ft Model	RP2202	10 ft Model	HW1005	10 ft Model	RP2482
12 Model	RP2203	12 Model	HW1006	12 Model	RP2483

BACKHOE:

WEAR SHOES		WEAR SHOE HARDWARE KITS		POLY (UHMW) WEAR PADS	
Standard	RP2011	Hardware Kit	HW1650	Poly Wear Pads	RP2131
Super Duty	RP2051				Binder Kit
Poly (UHMW)	RP2071				Level Gauge
Self Leveling	RP2091				Yellow Acrylic Enamel (1 qt)
Self Leveling Super Duty	RP2111				Yellow Acrylic Enamel (1 gal)
					Primer (1 qt)
					Primer (1 gal)
CUTTING EDGE		CUTTING EDGE HARDWARE KITS		HOLD DOWNS	
10 ft Model	RP2202	10 ft Model	HW1005	10 ft Model	RP2482
12 ft Model	RP2203	12 ft Model	HW1006	12 ft Model	RP2483
14 ft Model	RP2204	14 ft Model	HW1007	14 ft Model	RP2484

SKID STEER:

WEAR SHOES		WEAR SHOE HARDWARE KITS		POLY (UHMW) WEAR PADS	
Standard	RP2011	Hardware Kit	HW1650	Poly Wear Pad	RP2131
Super Duty	RP2051				Level Gauge
Poly (UHMW)	RP2071				Yellow Acrylic Enamel (1 qt)
Self Leveling	RP2091				Yellow Acrylic Enamel (1 gal)
Self Leveling Super Duty	RP2111				Primer (1 qt)
					Primer (1 gal)



SKID STEER (CONTINUED)

CUTTING EDGE		CUTTING EDGE HARDWARE KITS		HOLD DOWNS	
6 ft Model	RP2250	6 ft Model	HW1150	6 ft Model	RP2500
8 ft Model	RP2252	8 ft Model	HW1152	8 ft Model	RP2502
10 ft Model	RP2254	10 ft Model	HW1154	10 ft Model	RP2504
12 ft Model	RP2255	12 ft Model	HW1155	12 ft Model	RP2505

COMPACT TRACTOR:

WEAR SHOES		WEAR SHOE HARDWARE KITS		OPTIONS	
Standard	RP2012	Hardware Kit	HW1750	Binder Kit	RP1002
				Level Gauge	RP1200

Yellow Acrylic Enamel (1 qt)    RP8020

Yellow Acrylic Enamel (1 gal)    RP8021

Primer (1 qt)    RP8022

Primer (1 gal)    RP8023

CUTTING EDGE		CUTTING EDGE HARDWARE KITS		HOLD DOWNS	
6 ft Model	RP2250	6 ft Model	HW1150	6 ft Model	RP2500
7 ft Model	RP2251	7 ft Model	HW1151	7 ft Model	RP2501
8 ft Model	RP2252	8 ft Model	HW1152	8 ft Model	RP2502
9 ft Model	RP2253	9 ft Model	HW1153	9 ft Model	RP2503
10 ft Model	RP2254	10 ft Model	HW1154	10 ft Model	RP2504

FUSION EDGE SNO PUSHER

LOADER / COMPACT WHEEL LOADER / BACKHOE / SKID STEER:

WEAR SHOES		CUTTING EDGE		COUPLER ASSEMBLY	
Left	RP2854 (Shoe Only)(Loader)	24" Cutting Edge Section (RP2862)		Tube Assembly	RP2864 (Loader)
Right	RP2855 (Shoe Only)(Loader)			Tube Assembly	RP2865 (CWL, Backhoe, Skid Steer)
Left	RP2858 (Full Shoe Assembly)(Loader)				
Right	RP2859 (Full Shoe Assembly)(Loader)				
Left	RP2856 (Shoe Only)(CWL, Backhoe, Skid Steer)				
Right	RP2857 (Shoe Only)(CWL, Backhoe, Skid Steer)				
Left	RP2860 (Full Shoe Assembly)(CWL, Backhoe, Skid Steer)				
Right	RP2861 (Full Shoe Assembly)(CWL, Backhoe, Skid Steer)				

Shoe Pin    RP2863

COUPLER OPTIONS		OPTIONS	
JRB 416	RP2867 (Loader)	Binder Kit	RP1002
JRB 418	RP2868 (Loader)	Yellow Acrylic Enamel (1 qt)	RP8020
Volvo L50 to L120	RP2869 (Loader)	Yellow Acrylic Enamel (1 gal)	RP8021
CAT IT	RP2870 (Loader)	Primer (1 qt)	RP8022
CAT Fusion	RP2871 (Loader)	Primer (1 gal)	RP8023
CAT IT	RP2901 (CWL, Backhoe, Skid Steer)		
Universal	RP2902 (CWL, Backhoe, Skid Steer)		
Posts	RP2900 (CWL, Backhoe, Skid Steer)		
Posts	RP2866 (Loader)		

STEEL EDGE SNO PUSHER

LOADER / BACKHOE / SKID STEER:

WEAR SHOES		POLY SUSPENSION (ONE PIECE)		POLY SUSPENSION HOLD DOWNS		OPTIONS	
Left	RP2803 (Loader)	RP2795 (Loader)		Hold Down Left	RP2799 (Loader)	Binder Kit	RP1000 (Loader)
Right	RP2804 (Loader)	RP2798 (Backhoe / Skid Steer)		Hold Down Right	RP2800 (Loader)	Binder Kit	RP1001 (Backhoe)
Left	RP2805 (Backhoe / Skid Steer)			Hold Down Left	RP2801 (Backhoe / Skid Steer)	Level Gauge	RP1200
Right	RP2806 (Backhoe / Skid Steer)			Hold Down Right	RP2802 (Backhoe / Skid Steer)	Yellow Acrylic Enamel (1 qt)	RP8020
						Yellow Acrylic Enamel (1 gal)	RP8021
						Primer (1 qt)	RP8022
						Primer (1 gal)	RP8023

CUTTING EDGE (ONE SECTIOI		HOLD DOWN		CUTTING EDGE HARDWARE KITS		TENSIONER		HINGE (ONE SECTION)	
One Section	RP2790	Hold Down Loader	RP2796	Hardware Kit	HW1302		RP2789		RP2788

PULLBACK SNO PUSHER

SKID STEER:

WEAR SHOES		WEAR SHOE HARDWARE KITS		POLY (UHMW) WEAR PADS		CONTAINMENT SHIELD	
Standard	RP2011	Hardware Kit	HW1650	Poly Wear Pad	RP2131	6ft Model	RP2821
Pullback Shoe	RP2013	Shoe Kit (Pullback Shoe)	HW1800	Poly Wear Pad (Pullback Shoe) RP2133		8ft Model	RP2822
Super Duty	RP2051					10ft Model	RP2823
Poly (UHMW)	RP2071					12ft Model	RP2824
Poly Shoe (UHMW) Pullback Shoe		RP2073					
Self Leveling		RP2091					
Self Leveling Super Duty		RP2111					

CUTTING EDGE		CUTTING EDGE HARDWARE KITS		HOLD DOWNS		OPTIONS	
6 ft Model	RP2250	6 ft Model	HW1150	6 ft Model	RP2500	Level Gauge	RP1200
8 ft Model	RP2252	8 ft Model	HW1152	8 ft Model	RP2502	Yellow Acrylic Enamel (1 qt)	RP8020
10 ft Model	RP2254	10 ft Model	HW1154	10 ft Model	RP2504	Yellow Acrylic Enamel (1 gal)	RP8021
12 ft Model	RP2255	12 ft Model	HW1155	12 ft Model	RP2505	Primer (1 qt)	RP8022
						Primer (1 gal)	RP8023

FOLDOUT SNO PUSHER

LOADER:

WEAR SHOES		WEAR SHOE HARDWARE KITS		POLY (UHMW) WEAR PADS	
Standard	RP2010	Hardware Kit	HW1600	Poly Wear Pad	RP2130
Super Duty	RP2050				
Poly (UHMW)	RP2070				
Self Leveling	RP2090				
Self Leveling Super Duty	RP2110				

CUTTING EDGE		CUTTING EDGE HARDWARE KITS		HOLD DOWNS		OPTIONS	
14 ft Model	RP2361	14 ft Model	HW1101	14 ft Model	RP2421	Binder Kit	RP1004
16 ft Model	RP2362	16 ft Model	HW1102	16 ft Model	RP2422	Level Gauge	RP1200
18 ft Model	RP2363	18 ft Model	HW1103	18 ft Model	RP2423	Yellow Acrylic Enamel (1qt)	RP8020
20 ft Model	RP2364	20 ft Model	HW1104	20 ft Model	RP2424	Yellow Acrylic Enamel (1 gal)	RP8021
						Primer (1 qt)	RP8022
						Primer (1 gal)	RP8023
						Hydraulic Kit	RP1209

SUPER DUTY SNO PUSHER

LOADER:

WEAR SHOES		WEAR SHOE HARDWARE KITS	
Standard	Super Duty	RP2056	Hardware Kit    HW1950

CUTTING EDGE		CUTTING EDGE HARDWARE KITS		HOLD DOWNS		OPTIONS	
10 ft Model	RP2290	10 ft Model	HW1200	10 ft Model	RP2515	Binder Kit	RP1003
12 ft Model	RP2291	12 ft Model	HW1201	12 ft Model	RP2516	Level Gauge	RP1200
14 ft Model	RP2292	14 ft Model	HW1202	14 ft Model	RP2517	Yellow Acrylic Enamel (1 qt)	RP8020
16 ft Model	RP2293	16 ft Model	HW1203	16 ft Model	RP2518	Yellow Acrylic Enamel (1 gal)	RP8021
18 ft Model	RP2294	18 ft Model	HW1204	18 ft Model	RP2519	Primer (1 qt)	RP8022
20 ft Model	RP2295	20 ft Model	HW1205	20 ft Model	RP2520	Primer (1 gal)	RP8023
24 ft Model	RP2296	24 ft Model	HW1206	24 ft Model	RP2521		
30 ft Model	RP2297	30 ft Model	HW1207	30 ft Model	RP2522		



# LOW PROFILE SNO PUSHER

LOADER:									
WEAR SHOES		CUTTING EDGE		WEAR SHOE HARDWARE KITS		OPTIONS		HOLD DOWN	
Front Shoe	HW1600	18 ft Model	RP2333	Hardware Kit	HW1850	Binder Kit	RP1000	Hold Down	RP2403
Rear Shoe	HW1850					Level Gauge	RP1200		
						Yellow Acrylic Enamel (1 qt)	RP8020		
						Yellow Acrylic Enamel (1 gal)	RP8021		
						Primer (1 qt)	RP8022		
						Primer (1 gal)	RP8023		

# TURF PUSHER

Pro-Tech can offer customers coupler options to fit a variety of machines. If the desired coupler is not listed please contact us.

SKID STEER / TRACTOR / UTV:									
PIN ON COUPLERS					PAINT				
Universal	RP2811				Yellow Acrylic Enamel (1 qt.)	RP8020			
John Deere 300/400	RP2807				Yellow Acrylic Enamel (1 gal.)	RP8022			
John Deere 500 series series	RP2808				Driquick Buff Primer (1 qt.)	RP8022			
Toro coupler	RP2809				Driquick Buff Primer (1 gal.)	RP8023			
Post receptacle	RP2810								
Euro	RP2826								
Bobcat/Polaris (Use with Pro-Tech System)	RP2827								

# SNO BLADE

SKID STEER:									
WEAR SHOES		HYDRAULICS		WINGS		MISC.			
Wear Shoe-Standard-Series 9	RP2837	Hose assembly 102" (1/2" NPT)	RP2841	Side Curtain- Left ABS	RP2845	Marker Flag Kit (2 pc. Assy Flag Set)	RP2834		
Retainer Assembly	RP2840	Hose assembly 32" (1/2" NPT)	RP2842	Side Curtain- Right ABS	RP2846				
		Relief valve (set to 3500 psi)	RP2843	ABS Wing- Left	RP2847				
		Cylinder	RP2844	ABS Wing- Right	RP2848				
				ABS Wing- Hold Down	RP2849				
				ABS Rubber Stiffener	RP2850				
CUTTING EDGE					PAINT				
T-Bar Assembly	RP2835				Yellow Acrylic Enamel (1 qt.)	RP8020			
Trip Spring	RP2836				Yellow Acrylic Enamel (1 gal.)	RP8022			
ABS Cutting Edge 8'	RP2838				Driquick Buff Primer (1 qt.)	RP8022			
ABS Cutting Edge 10'	RP2839				Driquick Buff Primer (1 gal.)	RP8023			
Trip Edge Pin	RP2851								

# V PLOW

LOADER:									
WEAR SHOES		CUTTING EDGE		PAINT					
Standard Series 6	RP2015	40" V Plow Cutting Edge	RP2729	Yellow Acrylic Enamel (1 qt.)	RP8020				
40S	RP2018	48" V Plow Cutting Edge	RP2730	Yellow Acrylic Enamel (1 gal.)	RP8022				
		60" V Plow Cutting Edge	RP2731	Driquick Buff Primer (1 qt.)	RP8022				
		72" V Plow Cutting Edge	RP2732	Driquick Buff Primer (1 gal.)	RP8023				





Pro-Tech Manufacturing and Distribution, Inc.

711 West Avenue  
Rochester, NY 14611

(844) 204-8211

[snopusher.com](http://snopusher.com)

