



**Haulmark®**

**EDGE® ALX STACKER TRAILERS**

## **WHEN RACING BECOMES MORE THAN A HOBBY**

Are you ready for the big time? Then take a look at the EDGE® ALX Stack trailer, designed for the motorsports professional and serious recreational enthusiast. Not only are EDGE® ALX Stackers large enough to haul multiple vehicles, but they have enough storage space for spare parts, tools and diagnostic equipment.

Trailers shown may feature optional equipment available at an additional charge.

**THE EDGE® ALX**  
ALL ALUMINUM

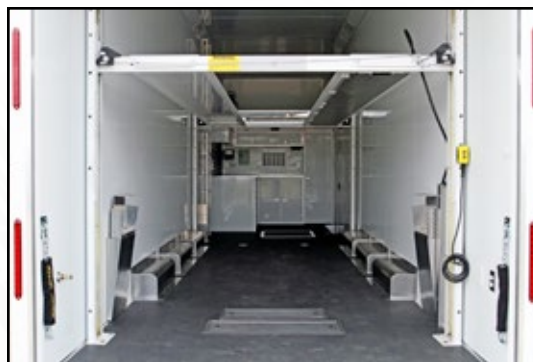
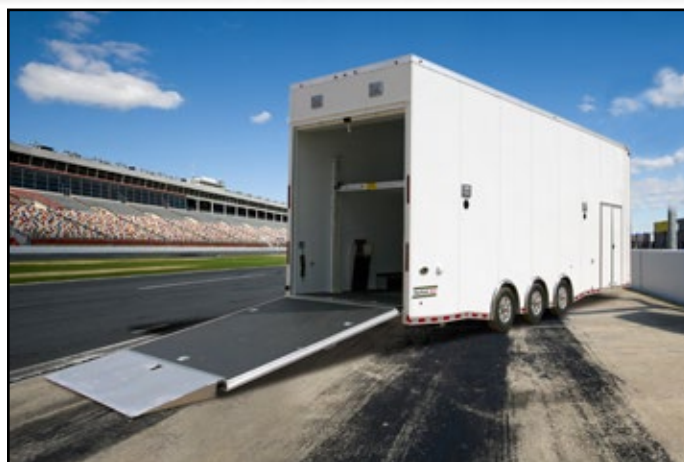
# SPECIFICATIONS

**THE EDGE<sup>®</sup> ALX**  
ALL ALUMINUM

		HARS85X24WR4	HARS85X24WR5	HARS85X28WR5	HARS85X32WR5
<b>Body:</b>	<b>Length</b>	24' 0"	24' 0"	28' 0"	32' 0"
	<b>Width</b>	8' 4"	8' 4"	8' 4"	8' 4"
<b>Overall:</b>	<b>Length</b>	29' 0"	29' 0"	33' 0"	37' 0"
	<b>Width</b>	8' 6"	8' 6"	8' 6"	8' 6"
	<b>Height</b>	13' 5"	13' 5"	13' 5"	13' 5"
<b>Interior:</b>	<b>Length</b>	23' 8"	23' 8"	27' 8"	31' 8"
	<b>Width</b>	8' 0"	8' 0"	8' 0"	8' 0"
	<b>Height</b>	11' 3"	11' 3"	11' 3"	11' 3"
<b>Width Between Wheel Boxes</b>		81"	81"	81"	81"
<b>Platform Height</b>		25"	25"	25"	25"
<b>Auto Lift Length</b>		13' 0"	13' 0"	16' 0"	16' 0"
<b>Auto Lift Height</b>		6' 8"	6' 8"	6' 8"	6' 8"
<b>Torflex<sup>®</sup> Suspension E-Z Lube<sup>®</sup> Axles: Qty</b>		Triple	Triple	Triple	Triple
<b>Electric Brakes with Breakaway Kit</b>		Electric Drum	Electric Drum	Electric Drum	Electric Drum
<b>Radial Tire Size</b>		LT235/85R16	LT235/85R16	LT235/85R16	LT235/85R16
<b>Tire Load Range</b>		G	G	G	G
<b>Hitch Ball Size</b>		2-5/16"	2-5/16"	2-5/16"	2-5/16"
<b>Hitch Height to Top of Ball</b>		23"	23"	23"	23"
<b>Hitch Weight (% of Curb Weight)</b>		10% - 15%	10% - 15%	10% - 15%	10% - 15%
<b>GVWR</b>		18,000 lbs.	21,000 lbs.	21,000 lbs.	21,000 lbs.
<b>Rear Ramp Door Opening - Width x Height</b>		92" x 96"	92" x 96"	92" x 96"	92" x 96"
<b>Side Double Door Opening - Width x Height</b>		48" x 72"	48" x 72"	60" x 78"	60" x 78"
<b>12v Male Connection</b>		7-way	7-way	7-way	7-way
<b>Tube Main Rails</b>		2" x 8"	2" x 8"	2" x 8"	2" x 8"

## STANDARD FEATURES

- Polished Aluminum Front Cap & Corners
- 1-Piece Aluminum Roof
- .040 Bonded Aluminum Exterior (No Screws)
- Spread Axles with Drop Skirting
- 24" ATP Stoneguard
- 8-Bolt 16" Radial Tires with Silver Viper Aluminum Wheels
- 2-5/16" Adjustable Height Coupler (25,000 lbs.)
- 12K Hydraulic Landing Gear with Manual Override
- 12v LED 9" x 7" Exterior Scene Lights (4)
- 12v LED Clear Lens Exterior Lighting
- 3/4" PlexCore™ Decking w/ Black Coin Rubber Floor Covering
- 3/8" PlexCore™ Sidewall Liner w/ .030 White Aluminum Covering
- White Vinyl Ceiling Liner
- Steel Car Hoist System with 36" Extension
- Bunk/Attic (6' 6" from Floor to Under Side of Bunk/Attic)
- 36" Aluminum Ramp Extension with Large Bumpers
- Generator Compartment with 48" x 32" Access Door
- Air Compressor Prep Package
- 120/240v 50a Motorbase Receptacle with Lock Connect
- 12v Main Shut Off Switch
- 12v LED 14" Flush Mount Ceiling Lights (8)
- 12v LED 6" Round Flush Mount Dome Lights (4)
- 16" OC Tube Crossmembers
- 16" OC Vertical Posts
- 16" OC Tube Roof Structure
- Marine Battery with Vented Interior Flount Mount Box
- D-Ring Tie-Downs with Welded Plates (4)



*Trailers shown may feature optional equipment available at an additional charge.*

