

The Wells Cargo logo is a black circle with the words "WELLS" and "CARGO" stacked vertically in white, bold, sans-serif capital letters. The background of the entire advertisement is a collage of images: a steering wheel and dashboard of a classic car, a person on a boat, and a close-up of a car seat.

**WELLS
CARGO®**

ROAD FORCE® AUTO THE SMART CHOICE

SPORTY, VERSATILE & PACKED WITH POPULAR FEATURES!

Unlike the other models in the Road Force® line-up, the 8.5' wide is an auto hauler at heart. If you're a collector or racer looking for superior quality, durability and style, then the 8.5' wide Road Force® is a smart choice. For starters, the Road Force® features a bonded exterior, an extra wide 94" rear ramp door opening, no-show beavertail, side entry door with recessed step, sidewall vents and tie-down rings - all standard. Factor in the radial tires, LED slim line tail lights, ArmorTech Covered A-Frame and a 3-year limited warranty; now you know you've got a trailer that's packed with value and built to last!



Trailers shown may feature optional equipment available at an additional charge.

ROAD FORCE®

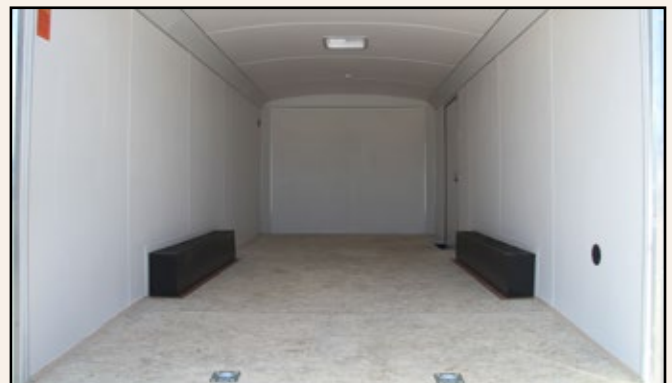
SPECIFICATIONS



	RF8516T2	RF8520T2	RF8524T2	RF8528T3
Body: Length Width	16' 9" 8' 4"	20' 9" 8' 4"	24' 9" 8' 4"	28' 10" 8' 4"
Overall: Length Width Height	19' 6" 8' 6" 8' 7"	23' 6" 8' 6" 8' 7"	27' 6" 8' 6" 8' 7"	31' 10" 8' 6" 8' 8"
Interior: Length Width Height	16' 5" 8' 0" 6' 7"	20' 5" 8' 0" 6' 7"	24' 5" 8' 0" 6' 7"	28' 6" 8' 0" 6' 8"
Width Between Wheel Wells	84"	84"	84"	84"
Platform Height at Beavertail	17"	17"	17"	18"
Spring Suspension E-Z[®] Lube Axles: Qty Total Capacity	Tandem 7,000 lbs.	Tandem 7,000 lbs.	Tandem 7,000 lbs.	Tandem 10,200 lbs.
Brakes with Breakaway Kit	Electric Drum	Electric Drum	Electric Drum	Electric Drum
Radial Tire Size Tire Load Range	ST205/75R15 C	ST205/75R15 C	ST205/75R15 C	ST225/75R15 D
Hitch Ball Size	2-5/16"	2-5/16"	2-5/16"	2-5/16"
Hitch Height to Top of Ball	20"	20"	20"	21"
Hitch Weight (% of Curb Weight)	10% to 15%	10% to 15%	10% to 15%	10% to 15%
Curb Weight (Approximate)	2,805 lbs.	3,245 lbs.	3,685 lbs.	4,170 lbs.
GVWR	7,000 lbs.	7,000 lbs.	7,000 lbs.	9,990 lbs.
Payload Capacity (Approximate)	4,195 lbs.	3,755 lbs.	3,315 lbs.	5,820 lbs.
Rear Ramp Door Opening - Width x Height	94" X 75"	94" X 75"	94" X 75"	94" X 75"
12V Male Connection	7-way	7-way	7-way	7-way
Beavertail	32"	48"	48"	48"

STANDARD FEATURES

- Radius Front/Round Roof with Silver Cap
- 15" Radial Tires with Silver Spoke Wheels
- ATP Fenderettes
- .030 Aluminum Exterior Bonded (No Screws)
- .080 Aluminum Top Wrap
- 1-Piece Aluminum Roof
- LED Slim Line Tail Lights
- LED Heavy-Duty Oval Clearance Lights
- 24" ATP Stoneguard
- Flow-Thru Sidewall Vents
- Rear Ramp Door with Spring Assist
- 16" Ramp Extension
- 36" Side Entry Door with Flush Lock
- Recessed Step at Side Door
- 12V LED Dome Light with Wall Switch (2)
- 3/4" PlexCore™ Decking
- 3/8" PlexCore™ Sidewall Liner
- 5,000 lb. Square D-Rings with Welded Plate (4)
- Spring Axles with E-Z Lube[®] Hubs
- Electric Brakes with Breakaway Kit
- 2" X 6" Tube Main Rails
- Entire Chassis Undercoated
- ArmorTech™ on A-Frame and Rear End Rail
- 16" OC Tube Vertical Posts
- 16" OC Crossmembers
- 16" OC Roof Bows
- 3-Year Limited Warranty



Trailers shown may feature optional equipment available at additional charge.



www.wellscargo.com

Specifications, features, options, packages & pricing subject to change **without notice**. See your authorized Wells Cargo dealer for more information.